



Call us for a Trial Demo
1800 1034932

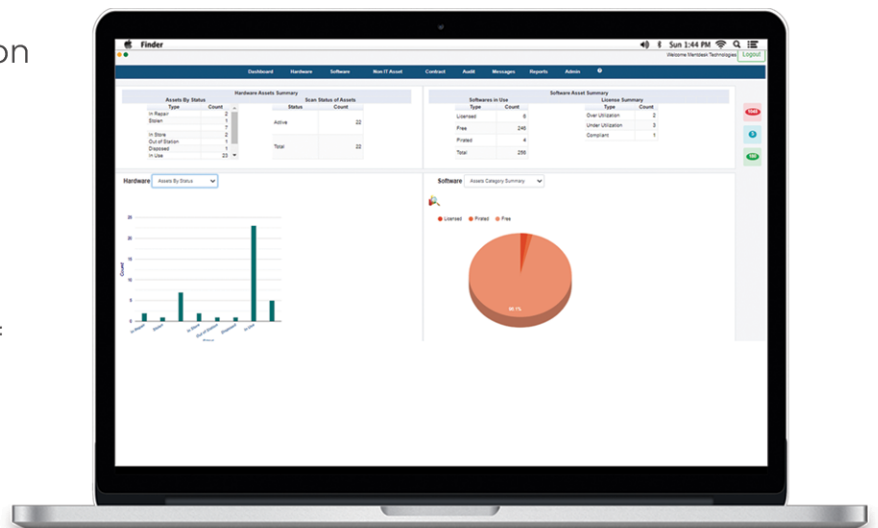
Email Us
contact@mentdesktechnologies.com



Asset Navigator

Manage IT Assets ensuring Security and Software Compliant

Asset Navigator is an Enterprise Asset Management (EAM) web application that helps to monitor and manage assets in your network. It provides you with a number of ways to ensure discovery of all the assets in your network. Enables management of assets of type Hardware and Software, IT and Non-IT, Physical and Virtual assets etc., Ensuring IT security and software compliance is made easy with the usage of this application in an Organization with better TCO. Real-time auto discovery helps auditing much easier to manage assets of Domain and Workgroups, Networked systems and out of Network systems. Enables auditing of particular software, windows patch in a set of assets or all the assets in your network.



Hardware Asset Management

- ☒ Automated Tracking of all your IT hardware and Software configured in the network, tracks all CI technical attributes like Processor Info, Hard disks, RAM capacity, NIC details, user accounts etc.,
- ☒ Capture and maintain the contract information, Warranty of parts, associated documents, maintain asset owner.
- ☒ Capture, maintain relationship and dependency mapping between assets.
- ☒ Track the asset from time of purchase till disposal and generate reports based on the existing asset status, expenses and help in planning for the subsequent year budget.
- ☒ Track Asset expenses, depreciation and total cost of ownership
- ☒ Physical Asset Tracking through Barcode/QR-code technology.
- ☒ All IT asset details can be consolidated in the Organization from a single system by installing remote scan tool.
- ☒ Helps in relationship management between Hardware and Software IT Assets
- ☒ Asset scanning over the network maintains and uses an encrypted network password.
- ☒ Enables scanning of assets and limit the scan to fetch the configured parameters.

Easy Control of All Assets

- ☒ Tracking all assets dynamically across multiple domains and locations leads to significant reduction in maintenance cost, and improve visibility and control.

Benefits of Asset Navigator

Asset Navigator makes it easier to handle the complete life cycle of an asset i.e. all stages from procurement to disposal
Ensure Effective Usage of available Hardware

- ☒ Easy to spot cases of under utilization of assets and review the asset allocation plan, work towards improving the process for utilization of available resources effectively.

☒ Reports help IT team to make informed decisions about hardware purchases.

- ☒ Different reports, graphs available help the IT team to track the inventory efficiently.

Overcome Manual Inventory Management overhead

- ☒ Auto discovery removes the chances of errors which is otherwise possible with manual inventory management.

Auto Discovery

- ☒ Agent-less, Agent Based and combination of the both models can be configured based on the needs.
- ☒ Auto Discovery of assets is possible by set of Subnet range, list of IP addresses, and list of asset names.
- ☒ Properties to be scanned on assets are configurable to get desired performance and meet the requirements.
- ☒ Auto Discovery of systems on Network and Out of Network, Domain and Workgroups
- ☒ Support various types of IP Devices and Operating Systems (Windows / Linux / AIX

Manage Software Inventory and Ensure Compliance

Tracks all under-licensed, over-licensed and non-compliant software and align to compliance. Good chance for IT team to align to compliance by getting rid of unauthorized software.

Smart way to Track Newly Installed and Uninstalled Software

Enables smart way of being notified about the list of installed and uninstalled software in the network assets after every scan on network.

Audit Software with ease

- ☒ Software audit process is made easy and quick, reduces time and cost of the Audit process.
- ☒ Audit of specific windows patch is possible in all the assets or specific list of assets.
- ☒ Spool real-time reports to get the list of new installed and recently uninstalled software from the network assets

Software Metering

Allocate Software usage to computers as per Organizational policies, Optimize and maintain the software usage.

Software Asset Management

Auto discovery of assets gets the installed software attributes like software name, version, and publisher and installation date.

Software License Compliance

- ☒ Maintain the software license inventory and track their usage.
- ☒ Effective reports indicating unused and under-utilized licenses, over-utilized licenses
- ☒ Helps in ensuring optimum usage of the bought licenses
- ☒ Enables tracking of the license expiry date and notifies upfront about the license expiry details

Software Security Compliance

- ☒ Feature to audit of specific software in all the assets or specific list of assets.
- ☒ Automated e-mail with audit reports at the end of auditing to the specified audience is configurable.
- ☒ Enables generating reports on the new installed software, uninstalled software for a given set of assets based on the last scan results
- ☒ Reports indicating the hardware assets having prohibited software installed enabling organization to quickly act and be compliant all the time.

Remote Management

Take Remote control of any systems to troubleshoot.

- Manage end point systems by taking remote control
- Manage Web Console and perform troubleshoot activities
- Handle Wake On LAN and remote shut down of any systems remotely
- Manage Users and concurrent sessions remotely

Patch Management

Apply patches, install third party applications to all the systems in the network.

Select the systems in the network, assess vulnerability, approval of patch, test and deploy patches remotely to all the systems or selected systems, generate reports and record

Asset Tracking

Monitor and track of IT and Non-IT assets with their physical location, status.

- Scanning IT and Non-IT asset through Barcode, QR-code labels
- Track movement of movable and fixed assets
- Track Asset lifecycle right from procurement to disposal

Purchase Order Management

Purchase order management is the Organization's processes for all purchases ensures proper justification and the costs, requirements has been agreed.

Purchase order management requirements derived from Contracts created for each asset with terms and conditions to get approvals from relevant department and New requirements pertaining to the IT expenditure by associating product vendors, suppliers etc.,

Mentdesk is a Unified Platform for IT Management addresses IT Service Management, IT Asset Management & Software Asset Management Solution Company ensuring IT Security and Software Compliance.